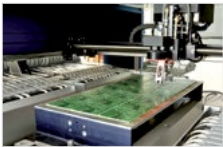




## **LED TRAFFIC SIGNS AND BOARDS**

**Road safety  
for all traffic participants**



- ▶ Research and development of LED solutions
- ▶ Manufacturing of LED products
- ▶ Implementation of LED projects
- ▶ Service and maintenance of LED products
- ▶ Upgrades of LED equipment

EKTA Group was established in 1992 and is currently one of the leading European manufacturers of LED products – screens, boards, signs, luminaires, etc.

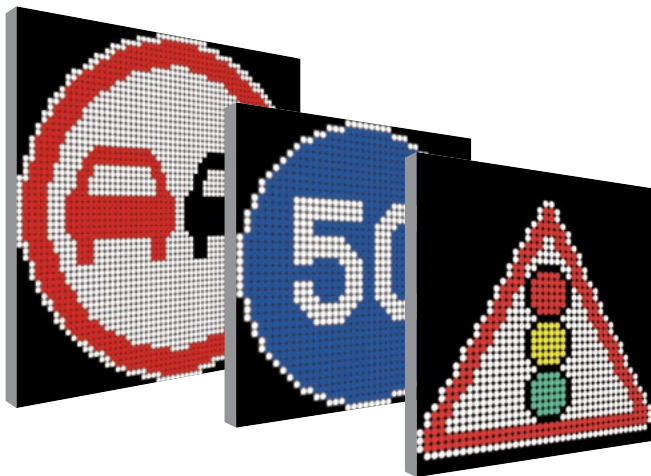
EKTA has over 25 years of engineering experience in research and development.

In-house production allows implementing innovative technologies and using the most reliable components supplied by the global leaders.

VMS LED

## LED VARIABLE MESSAGE ROAD SIGNS

Traffic management signs





90

90

90

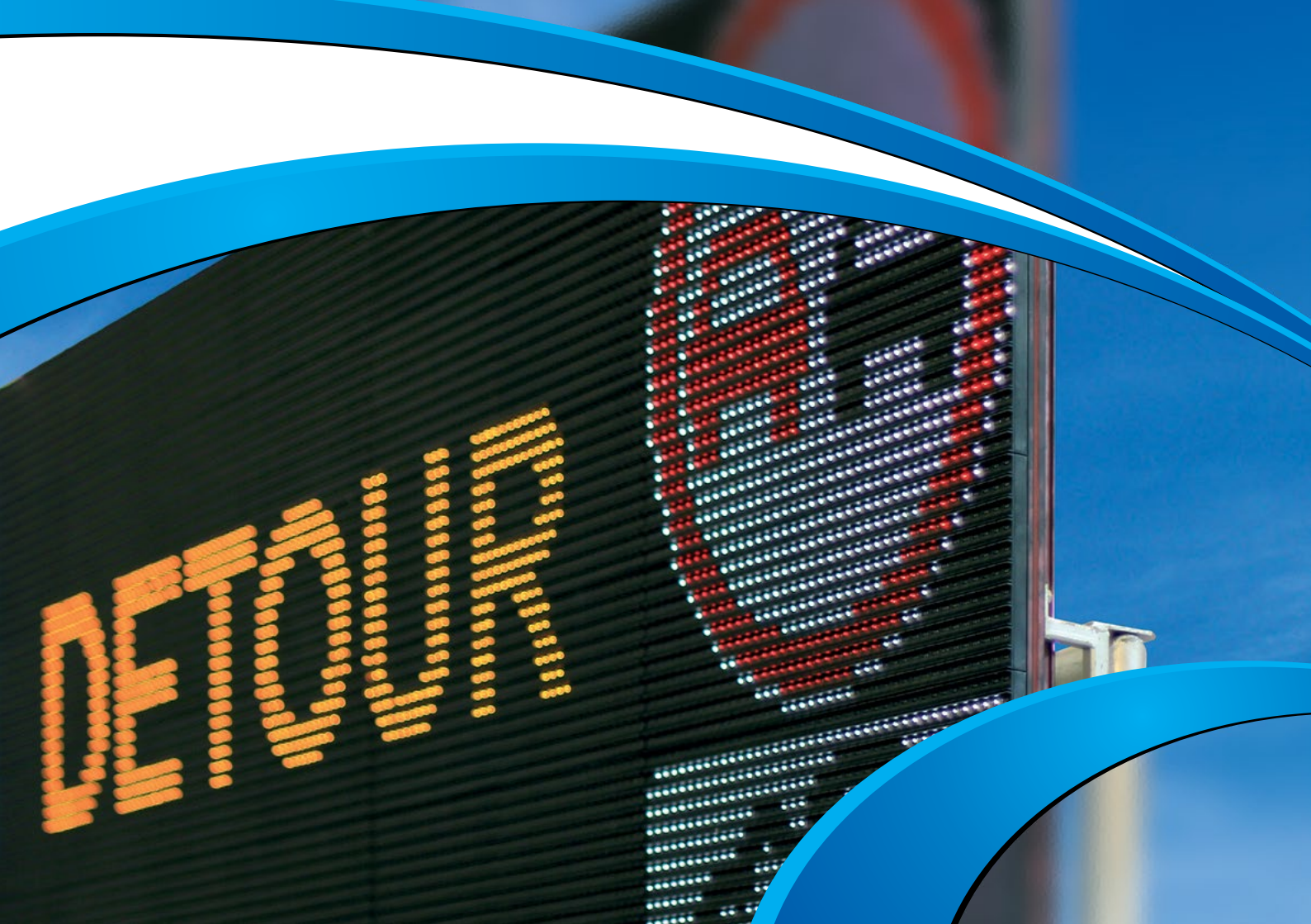
90

DMS LED

## LED VARIABLE MESSAGE TRAFFIC BOARDS

Information boards  
for traffic management

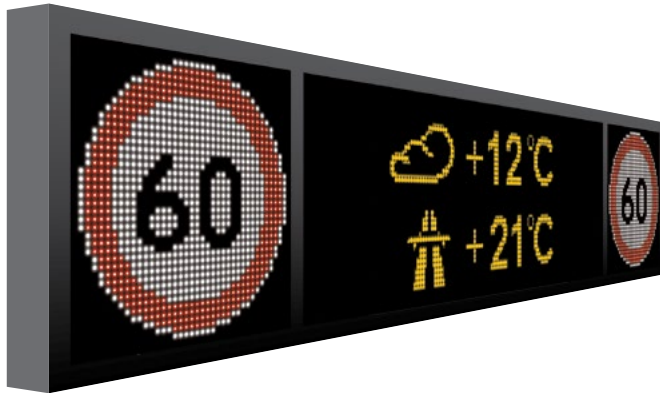




DMS LED

## LED VARIABLE MESSAGE TRAFFIC BOARDS

Road boards  
for traffic management





15:36

TAŞASYŇ BAKY BITARAP  
TÜRKMENISTAN



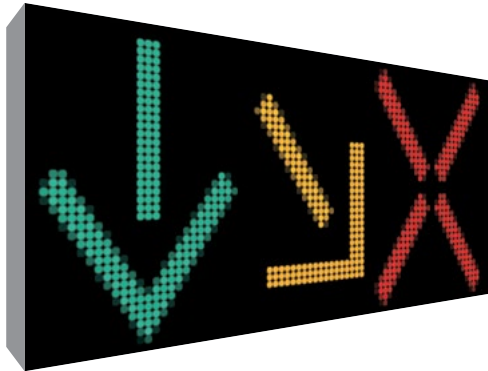
$t^{\circ}$  ýoluň 21.8°C  
 $t^{\circ}$  howanvň 36.3°C  
Ýeliň tizligi 5.0m/s



DMS LED

## LED VARIABLE MESSAGE TRAFFIC BOARDS

Traffic light  
for contraflow lane reversal





90

Blue directional sign with a white arrow pointing right.

**VMS**
**LED**

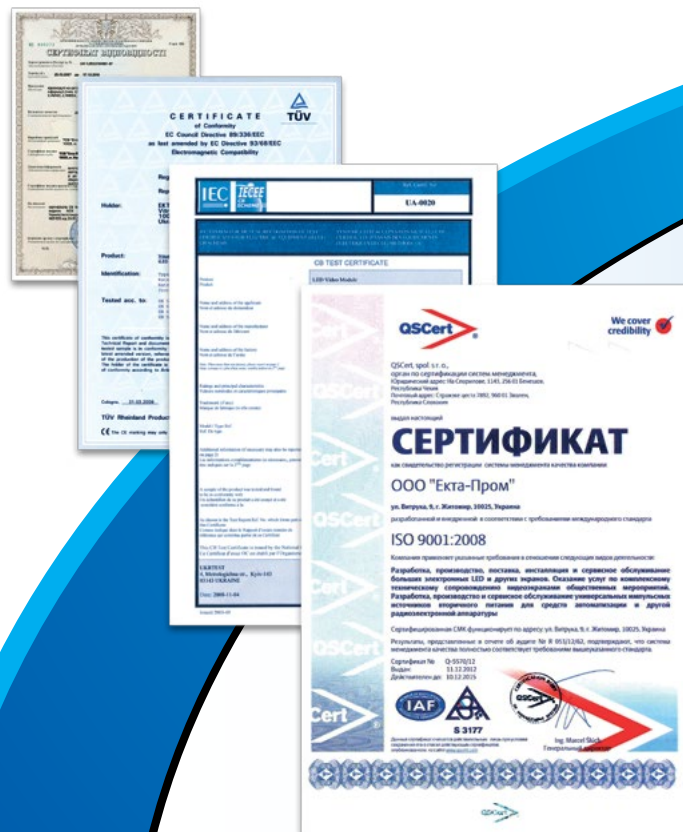
Model	VMS 20A-08	VMS 20RW-08	VMS 20C-08
Display area, m	0.8 x 0.8	0.8 x 0.8	0.8 x 0.8
Real pixel pitch, mm	20		
Display LEDs	Nichia LEDs		
Colors of LEDs	A	RW	RGB
Classification according to EN12966:2014			
Viewing angle	B1-B6 on demand		
Brightness	L3, L3(*)		
Contrast	R1		
Color quality	C2		
Temperature range	T1-T2		
Ingress protection	Body IP44, front surface IP56		
Power consumption, kW	0.14	0.14	0.2
Size (width x height x depth, mm)	800 x 800 x 118	800 x 800 x 118	800 x 800 x 118
Maximum weight, kg	23	23	23
Control interface	Ethernet 10BASE-T, RS-485		
External light detectors	Yes		

**DMS****LED**

Model	DMS 20A-3208	DMS 20A-4814	DMS 20RW-1218	DMS 20C-6416
Display area, m	3.2 x 0.8	4.8 x 1.4	1.2 x 1.8	6.4 x 1.6
Real pixel pitch, mm	20			
Display LEDs	Nichia LEDs			
Colors of LEDs	A	A	RW	RGB
<b>Classification according to EN12966:2014</b>				
Viewing angle	B1 - B6 on demand			
Brightness	L3, L3(*)			
Contrast	R1			
Color quality	C2			
Temperature range	T1-T2			
Ingress protection	Body IP44, front surface IP56			
Power consumption, kW	0.55	1.46	0.4	3.2
Size (width x height x depth, mm)	3200 x 800 x 118	4800 x 1400 x 118	1200 x 1800 x 118	6400 x 1600 x 118
Maximum weight, kg	92	210	60	368
Control interface	Ethernet 10BASE-T, RS-485			
External light detectors	Yes			

## CERTIFIED EQUIPMENT

- ▶ Undergoes certification in accordance with EN12966:2014 standard requirements
- ▶ ISO 9001:2008 certified
- ▶ 24/7 maintenance and service



**Legend to LED variable message signs and boards:**

**VMS XXP – YYZZ M**

**DMS XXP – YYZZ**

**VMS – LED variable message sign**

**DMS – LED dynamic message sign**

**XX – real pixel pitch**

**P – LED colors:**

 **A** – amber

 **R** – red

 **W** – white

 **B** – blue

   **C** – full color

**YYZZ – sign size:**

**YY** – length (m)

**ZZ** – height (m)



UKRAINE, 31 Turovskaya St.,  
office 8, Kyiv 04080  
Tel.: +38 044 428 7315  
Fax: +38 044 428 7319  
E-mail: [office@ekta-led.com](mailto:office@ekta-led.com)  
[www.ekta-led.com](http://www.ekta-led.com)